



SM200

2D USB BARCODE SCANNER

With its state-of-the-art technology, the SM200 barcode scanner provides excellent performance in checkout operations. A reliable scanner, suitable for a variety of work environments: its features and exceptional price-performance ratio make it the best solution for retail and warehouse applications. SM200 has an ergonomic design and is equipped with USB interface. The powerful integrated scanner detects all major 1D/2D barcodes and GS1 DataBar™ symbols, there including damaged or misprinted codes. The device also reads on display, reducing processing time and labor costs, increasing accuracy as well. Finally, the ScannerSet programming software provides extensive configuration options. SM200 is one of the most versatile solutions on the market, the best choice for any retail environment.



Scan or Click
the **QR CODE**
and Find out more
about Custom products

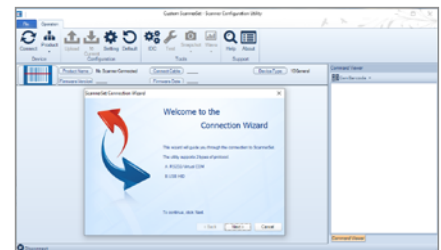
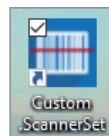


FEATURES

- **Excellent Reading Performance** for major 1D and 2D barcodes, e.g. of QR codes, even damaged or one finder pattern missing
- **The best price-performance ratio solution** on the market for retail and POS applications
- **Support multiple Interface options**, USB HID and Virtual COM
- **Facilitates both contact and air** 16KV Electrostatic discharge
- **Designed for IP41 sealing protection**
- **Connectable to Android tablets or smartphones** with optional cable
- **Supply output voltage:** +5V±5%
- **Current draw operation:** 335 mA
- **Light source:** White light LED
- **Sensor:** 1280(H) x 800 (V) pixels
- **Field of view:** Horizontal -55°, Vertical - 35°
- **Scan rate:** 60 fps (at full resolution)
- **Reading distance:** 250mm@20mil/0.5mm, PCS90%
- **Print contrast ratio:** 30%
- **Resolution:** 3mil/0.076mm@PCS90% Code39, 8mil/0.2mm@PCS90% QRCode
- **Reading angle** Test Conditions: Code 39, 10mil/0.25mm, PCS 90%
Pitch angle $\pm 5^{\circ} \sim 60^{\circ}$
Skew angle $\pm 5^{\circ} \sim 60^{\circ}$
- **Ambient light:** 100,000 Lux. Max.
- **Operating temperature:** 0 °C to 50 °C
- **Relative humidity:** 20% to 95% (Non-condensing)
- **Readable symbologies:** 1D: UPC-A, UPC-E, EAN-8/JAN-8, EAN-13/JAN-13, Code 39, Code 128, Interleaved 25, Industrial 25, Matrix 25, Codabar/NW7, Code 93, China Post, MSI/Plessey, Telepen, GS1 Databar Omni-directional, GS1 Databar Limited, GS1 Databar Expanded. 2D: Data Matrix, PDF 417, QR Code, Aztec, Micro PDF417, Micro QR Code, Dotcode. Option: Maxicode, Han Xin Code
- **Life time trigger switch:** 1,000,000 times @1kg ±50g cycles
- **MTBF:** 50,000 hours
- **Drop resistance:** 180 cm drop on concrete surface
- **Weight:** 90 g
- **Dimensions:** 65 mm (L) x 168 mm (W) x 54 mm (H)

CUSTOM SCANNERSET:

Software for configuring scanners in the SCANMATIC range (cable programming).



AVAILABLE MODELS

P/N

995ED040900233

DESCRIPTION

BARCODE SCANNER SM200 2D USB